

APLAST
ROTOUOLDING
PIPING | TOOLING



CARAVAN

Automotive program

The automotive industry plays a crucial role in the development and prosperity of Europe. We have met the strict requirements in the automotive industry with the production of tanks for the caravan industry. Through quality and cooperation in the development projects, we are managing to win and increasing number of customers.

We have developed the caravan tank type program for drinking and wastewater tank due to an increasing demand for tanks with standard dimensions, high-quality fabrication, and affordable prices.

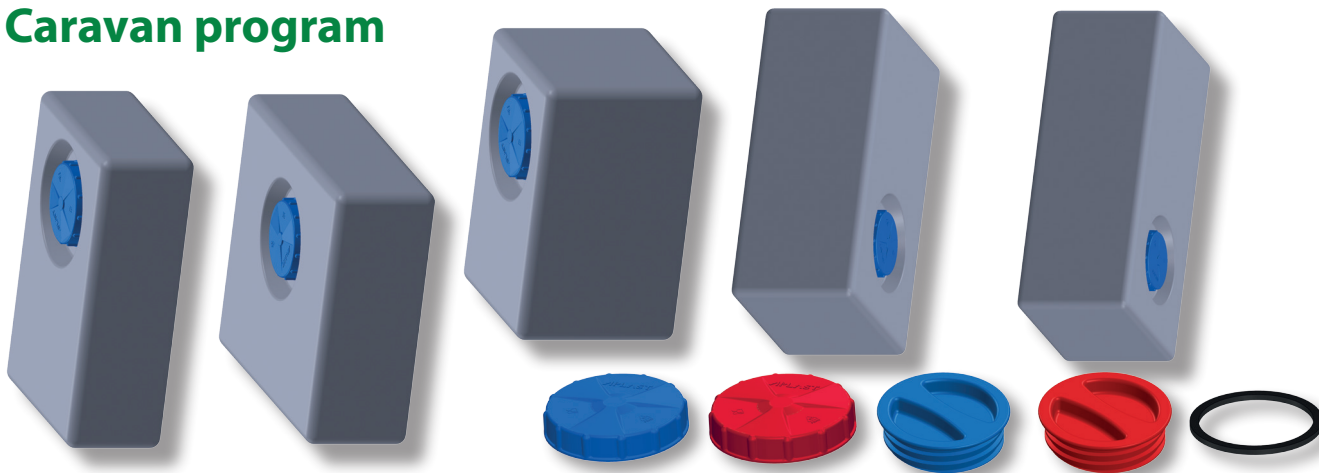


CARAVAN WASTE WATER TANK



CARAVAN DRINKING WATER TANK

Caravan program



| PICTURE | NAME | LENGTH (A) | WIDTH (B) | HEIGHT (C) | CENTRE LID (D) ø |
|---------|----------------------------------|------------|-----------|------------|------------------|
| | CARAVAN DRINKING WATER TANK 36L | 550 | 360 | 180 | 150 |
| | CARAVAN DRINKING WATER TANK 47L | 480 | 330 | 300 | 150 |
| | CARAVAN DRINKING WATER TANK 55L | 500 | 550 | 200 | 150 |
| | CARAVAN DRINKING WATER TANK 70L | 700 | 400 | 300 | 200 |
| | CARAVAN DRINKING WATER TANK 90L | 800 | 400 | 300 | 200 |
| | CARAVAN WASTE WATER TANK 36L | 550 | 360 | 180 | 150 |
| | CARAVAN WASTE WATER TANK 47L | 480 | 330 | 300 | 150 |
| | CARAVAN WASTE WATER TANK 55L | 500 | 550 | 200 | 150 |
| | CARAVAN WASTE WATER TANK 70L | 700 | 400 | 300 | 200 |
| | CARAVAN WASTE WATER TANK 90L | 800 | 400 | 300 | 200 |
| | CARAVAN COVER RED 120mm | - | - | - | 120 |
| | CARAVAN COVER BLUE 120mm | - | - | - | 120 |
| | CARAVAN COVER RED 140mm | - | - | - | 140 |
| | CARAVAN COVER BLUE 140mm | - | - | - | 140 |
| | CARAVAN COVER GASKET 120 - 140mm | - | - | - | 120 - 140 |

Industrial products on demand:



IDEA

Based on an idea, improvements and technical data, we prepare a development project, whose end result is a plastic, custom-made product. In doing so, we consider the economic, technical and execution aspects as much as possible.

TOOLMAKING PLANT

We have mastered all the necessary technology for manufacturing high-quality moulds for rotational moulding. The tool manufacturing process encompasses modelling, technical documentation, manufacturing a sheet metal mould, or a steel or aluminium mould using CNC milling, and sandblasting.

PRODUCTION ROTOMOULDING

Rotational shaping of plastic masses is a production method used for manufacturing plastic products. It differs from all other process methods by the fact that the heating, melting, shaping and cooling stages take place only after we insert the polymer into the mould and that external pressure is not needed during the shaping process.

PRODUCTION PLASTICS INJECTION MOULDING

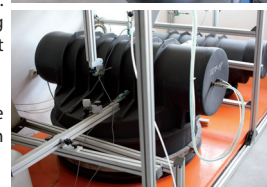
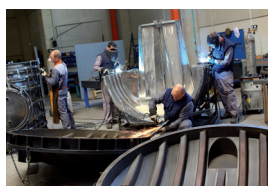
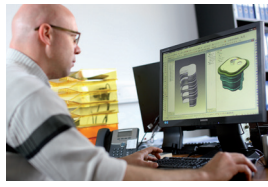
Due to the increasing needs for a combination of plastic rotomoulding products and injected parts we have also taken up the injection moulding of products. For this purpose, an injection moulding system for the production of pieces up to 1kg in weight is used.

CONTROL OF PRODUCTION AND PRODUCTS

ISO 9001:2008 has brought systematic thinking into our company and the realisation that everything we do is important for quality. We have obtained the Slovenian technical approval STS-07/114, STS-07/115 in The APLAST CARAVAN CLEAN tank is manufactured from materials in accordance with the W270 certificate.

STORAGE AND DISPATCH OF GOODS

In 2012, our company changed the course of internal logistics. Aplast infrastructure comprises 8500 m² of covered surfaces of business, production, assembly, storage facilities; machines and devices for making rotomoulding products, metal elements and the final assembly of products.



APLAST
ROTOMOULDING | PIPING | TOOLING

APLAST proizvodnja in trgovina d.o.o.
Petrovče 115a, 3301 Petrovče, Slovenija
www.aplast.si | info@aplast.si

ISO 9001
BUREAU VERITAS
Certification



ISO 14001
BUREAU VERITAS
Certification



YOUR RETAILER: