

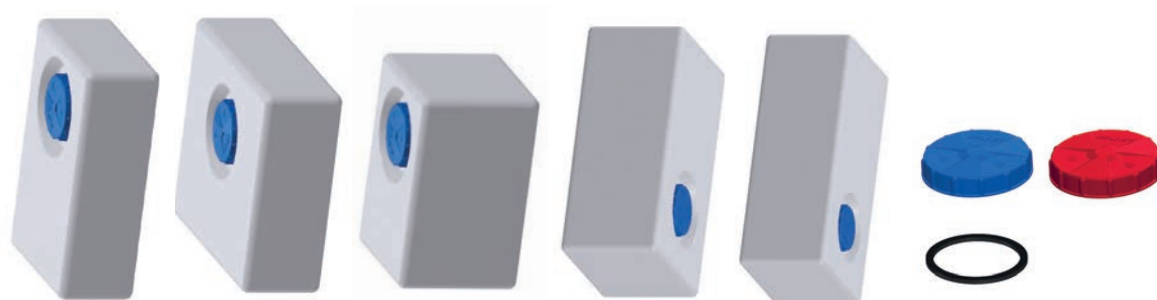
CARAVAN

DRINKING AND WASTE WATER TANKS



The automotive industry plays a crucial role in the development and prosperity of Europe. We have met the strict requirements in the automotive industry with the production of tanks for the caravan industry. Through quality and cooperation in the development projects, we are managing to win an increasing number of customers. We have developed the caravan tank type program for drinking and wastewater due to an increasing demand for tanks with standard dimensions, high-quality fabrication, and affordable prices.

DRINKING WATER TANKS



PICTURE	NAME	LENGTH (A)	WIDTH (B)	HEIGHT (C)	CENTRE LID (D) ø	ITEM NO.
	CARAVAN DRINKING WATER TANK 36 L	550	370	180	150	700000500
	CARAVAN DRINKING WATER TANK 47 L	480	330	300	150	700000505
	CARAVAN DRINKING WATER TANK 55 L	500	550	200	200	700000510
	CARAVAN DRINKING WATER TANK 70 L	700	400	300	200	700000515
	CARAVAN DRINKING WATER TANK 90 L	800	400	300	200	700000520
	CARAVAN COVER RED 140 mm	-	-	-	140	700000152
	CARAVAN COVER BLUE 140 mm	-	-	-	140	700000150
	CARAVAN COVER GASKET 120 - 140 mm	-	-	-	120 - 140	700000102

► DRINKING WATER TANK

Item no.: 700000600

Volume: 112 L

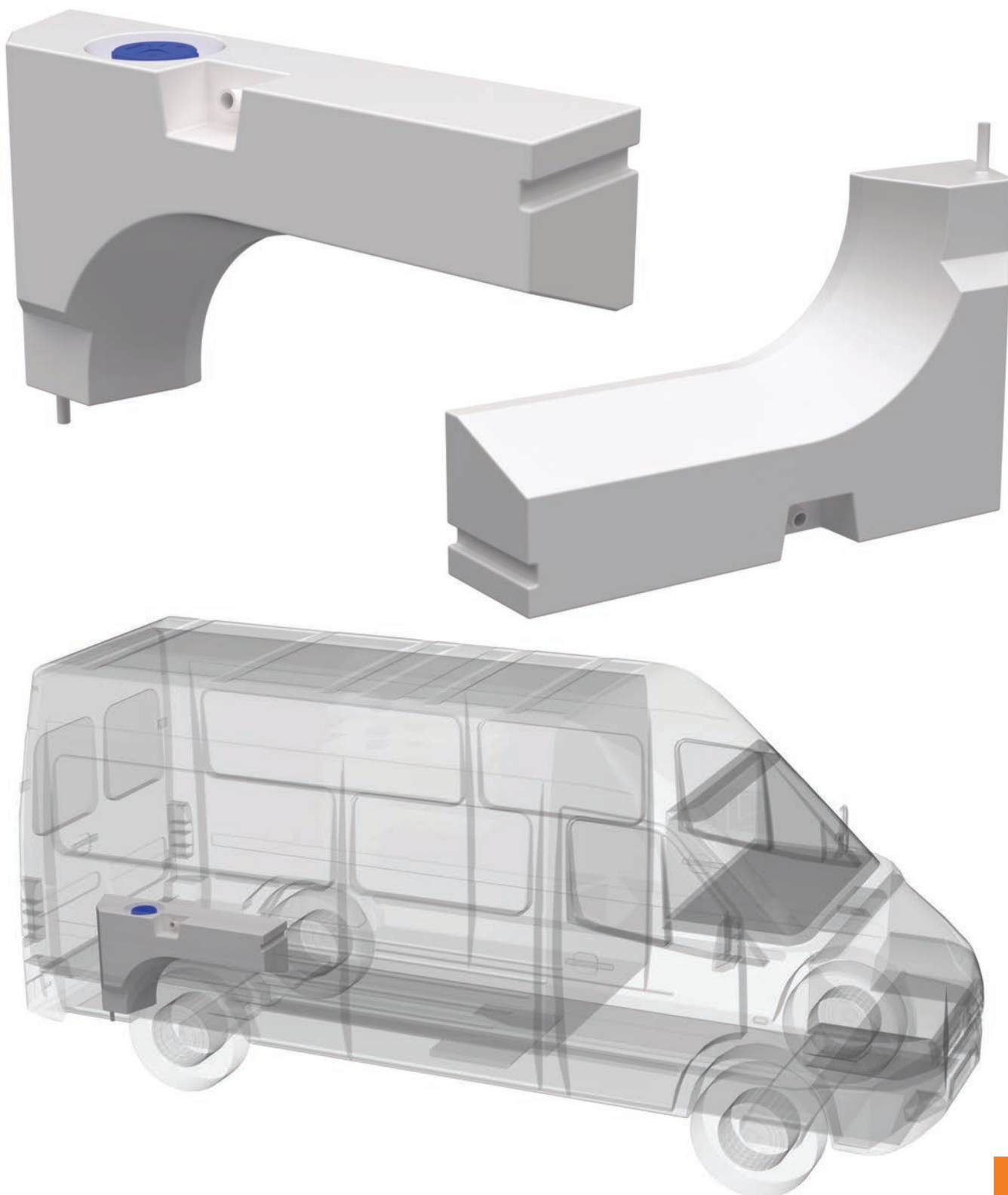
Material: Polyethylen (W270)

Dimension (cm): 125,3 (length) x 29,0 (width) x 77,0 (height)

Weight (kg): 8

Mounting position: On the wheel arch on the right back side

Vehicle type: Fiat Ducato, Citroen Jumper, Peugeot Boxer from vehicle model 2018, Mercedes Sprinter from vehicle model 2017, Ford Transit from vehicle model 2013, Renault Master from vehicle model 2010



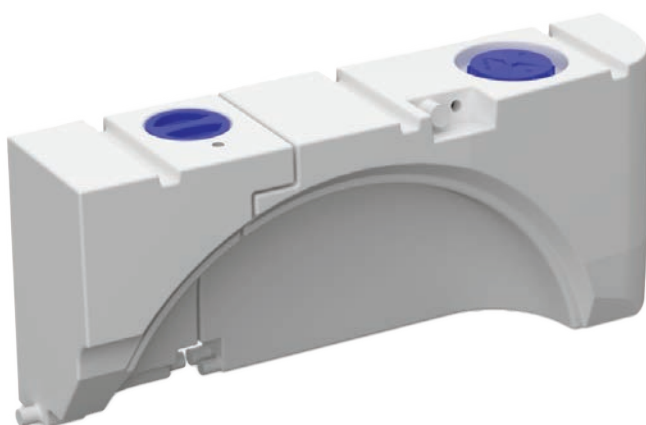
DRINKING WATER TANK SET



► DRINKING WATER TANK SET

Item no.:	700000720
Volume:	93 L
Material:	Polyethylene (W270)
Dimension (cm):	118,5 (length) x 28,0 (width) x 49,4 (height)
Weight (kg):	12
Mounting position:	On the wheel arch on the left side
Vehicle type:	VW T6

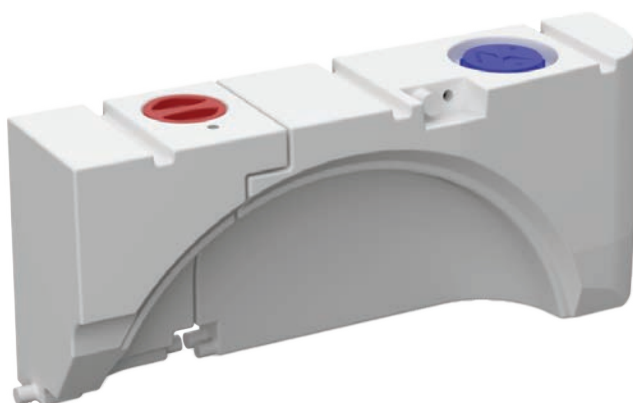
Note: The tanks should be connected with a flexible pipe (a connection is only allowed if both tanks are used for drinking water).



► DRINKING AND WASTE WATER TANK

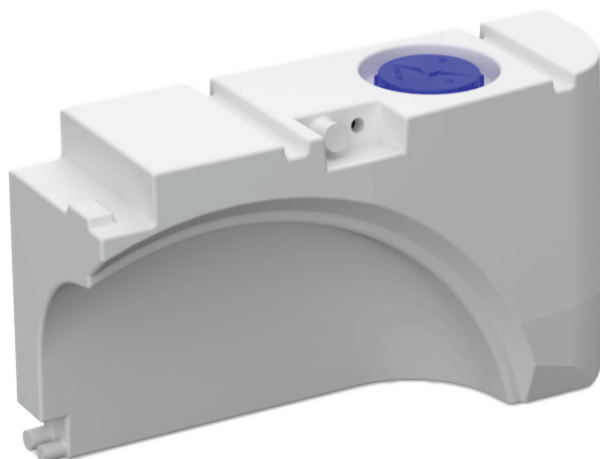
Item no.:	700000720
Volume:	93 L
Material:	Polyethylen (W270)
Dimension (cm):	118,5 (length) x 28,0 (width) x 49,4 (height)
Weight (kg):	12
Mounting position:	On the wheel arch on the left side
Vehicle type:	VW T6

Note: It is not allowed to connect the drinking and waste water tank because waste water contaminates the drinking water.



► DRINKING WATER TANK

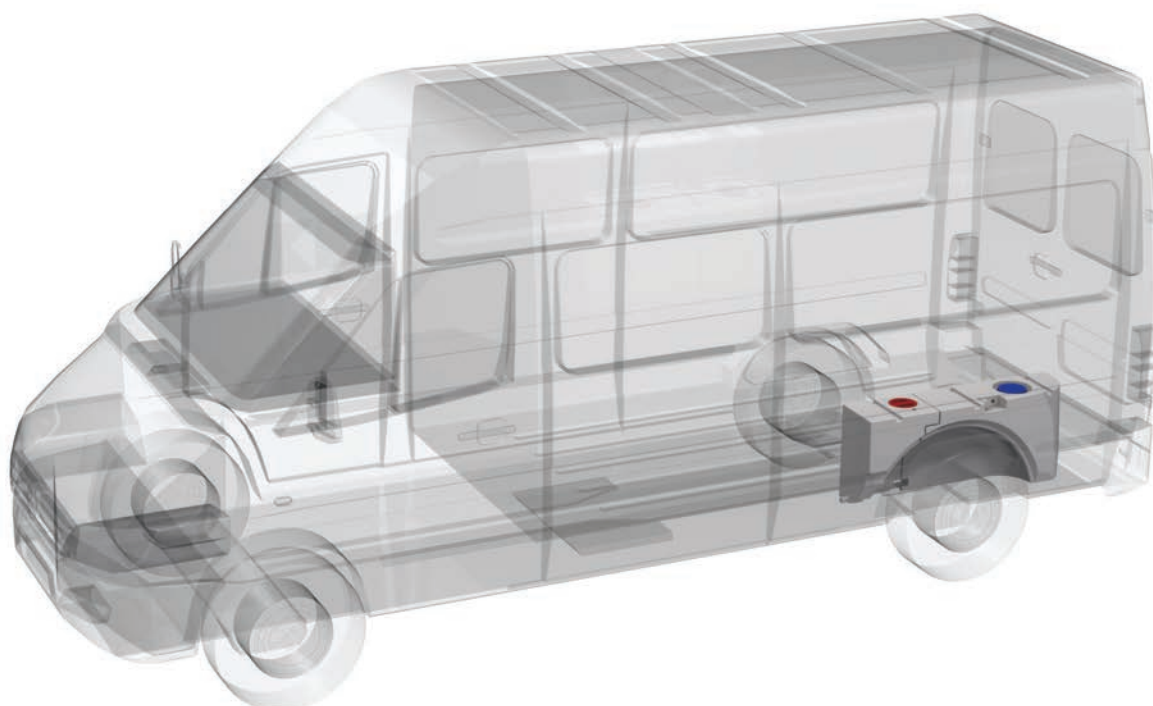
Item no.:	700000700
Volume:	65 L
Material:	Polyethylene (W270)
Dimension (cm):	88,5 (length) x 28,0 (width) x 49,4 (height)
Weight (kg):	8
Mounting position:	On the wheel arch on the left side
Vehicle type:	VW T6



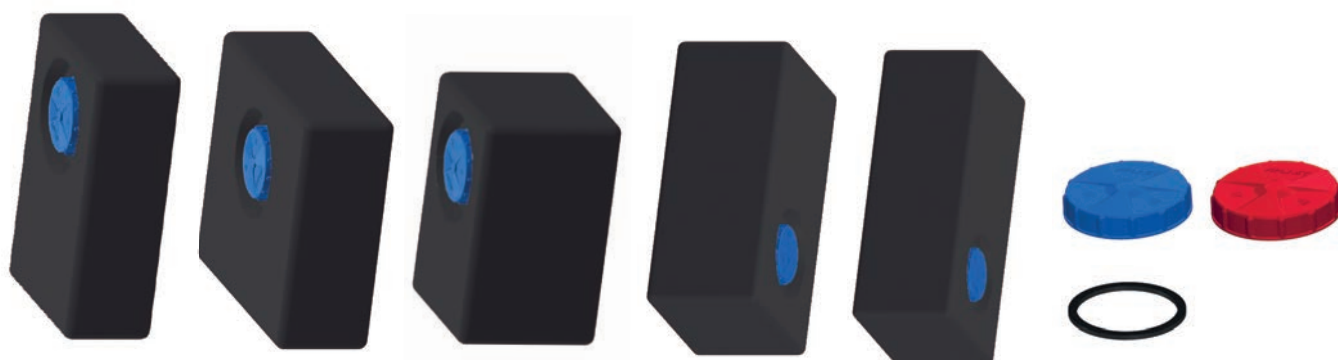
► WASTE WATER TANK

Item no.:	700000710
Volume:	28 L
Material:	Polyethylen (W270)
Dimension (cm):	39,0 (length) x 28,0 (width) x 49,4 (height)
Weight (kg):	4
Mounting position:	On the wheel arch on the left side
Vehicle type:	VW T6

Note: It is not allowed to connect the drinking and waste water tank because waste water contaminates the drinking water.



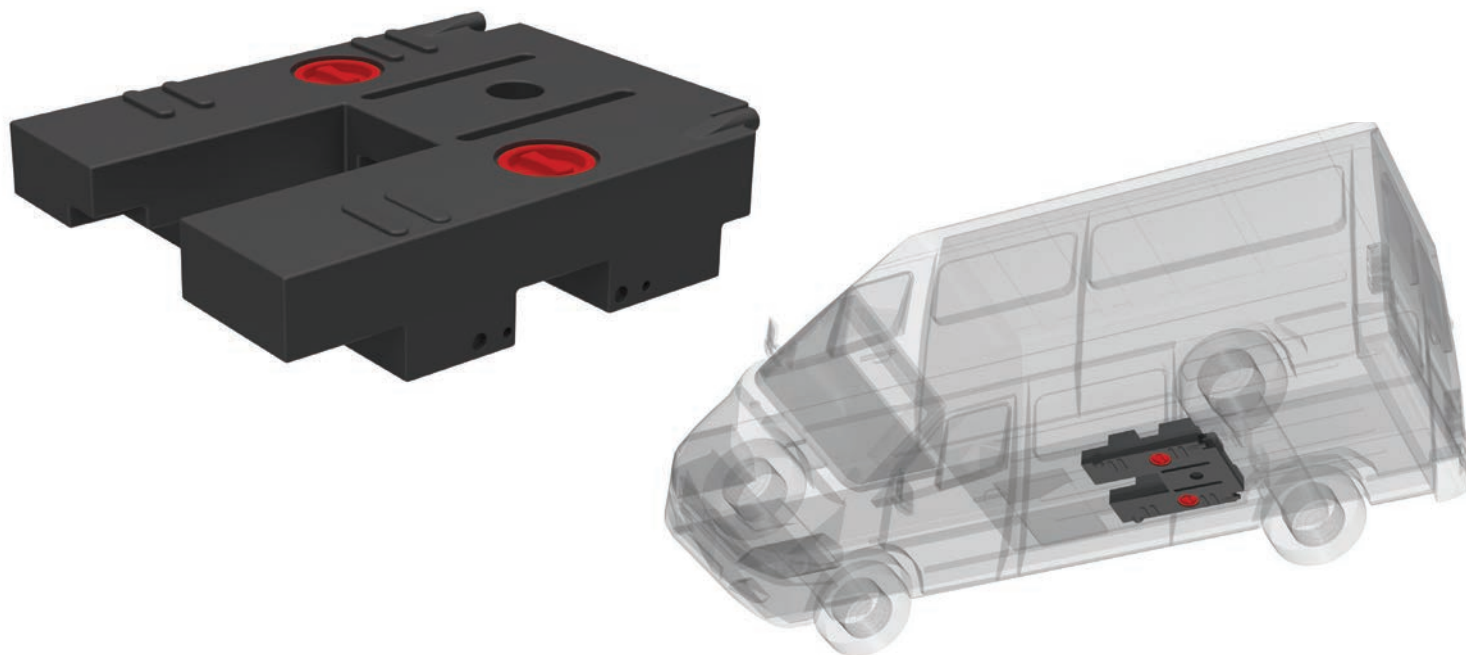
WASTE WATER TANKS



PICTURE	NAME	LENGTH (A)	WIDTH (B)	HEIGHT (C)	CENTRE LID (D) ø	ITEM NO.
	CARAVAN WASTE WATER TANK 36 L	550	370	180	150	700000100
	CARAVAN WASTE WATER TANK 47 L	480	330	300	150	700000105
	CARAVAN WASTE WATER TANK 55 L	500	550	200	200	700000110
	CARAVAN WASTE WATER TANK 70 L	700	400	300	200	700000115
	CARAVAN WASTE WATER TANK 90 L	800	400	300	200	700000120
	CARAVAN COVER RED 140 mm	-	-	-	140	700000152
	CARAVAN COVER BLUE 140 mm	-	-	-	140	700000150
	CARAVAN COVER GASKET 120 - 140 mm	-	-	-	120 - 140	700000102

► WASTE WATER TANK

Item no.:	700000211
Volume:	75 L
Material:	Polyethylen
Dimension (cm):	94,0 (length) x 75,0 (width) x 23,7 (height)
Weight (kg):	10
Mounting position:	In the chassis area in front of the rear axle
Vehicle type:	Fiat Ducato, Peugeot Boxer and Citroen Jumper from vehicle model 2018



► INSULATION FOR THE WASTE WATER TANK 75 L

Item no.:	700000250
Insulation thickness:	30 mm
Volume (mm):	102,2 (length) x 82,0 (width) x 31,0 (height), both parts together
Weight (kg):	2,5
Technical properties of material:	BASF 9230K EPP (expanded polypropylene)
Thermal conductivity of the material:	0,040 W/mK (by DIN 52612)
Density:	60 g/l
Colour:	Black



► WASTE WATER TANK

Item no.: 700000270

Volume: 100 L

Material: Polyethylen

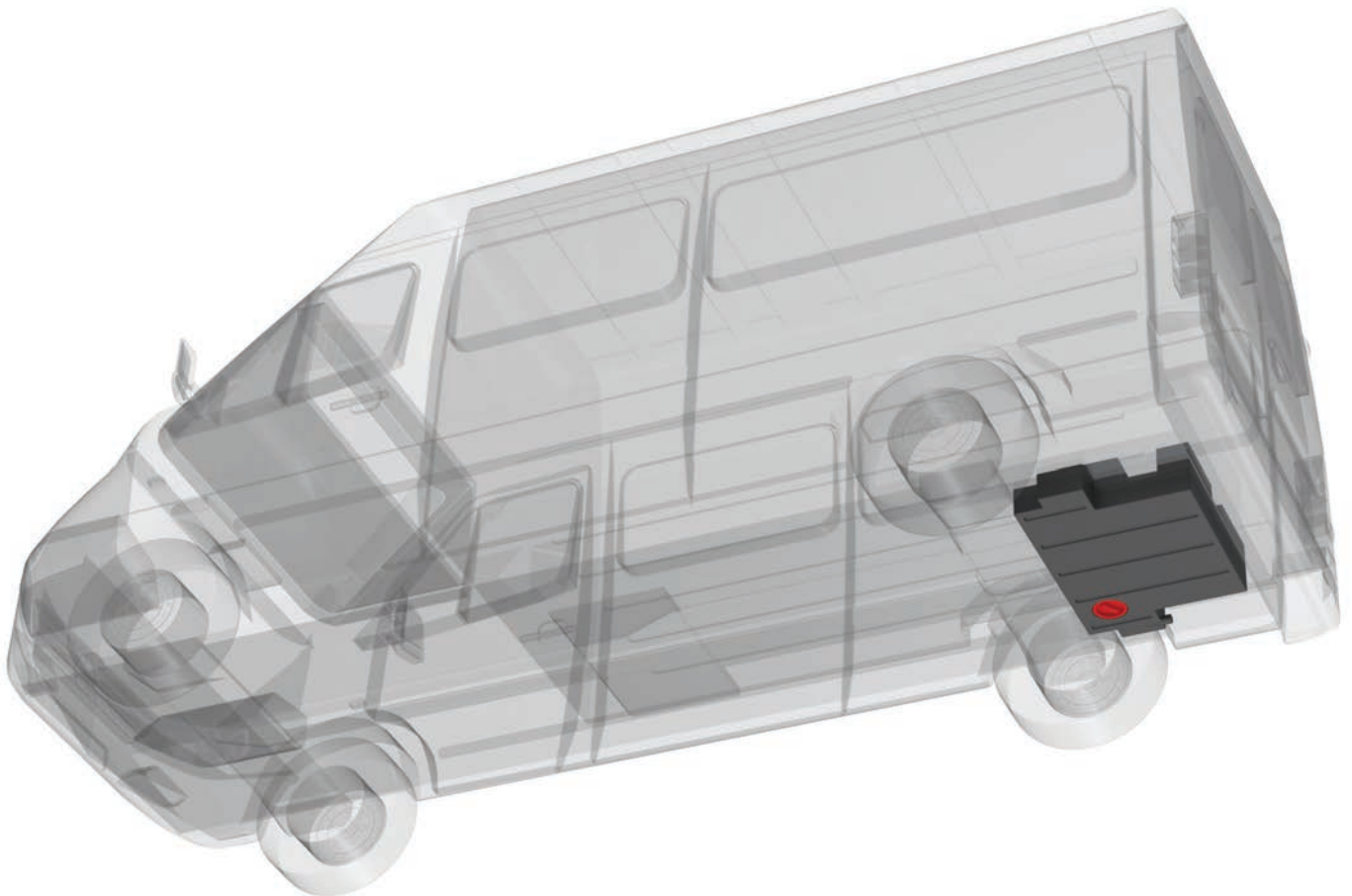
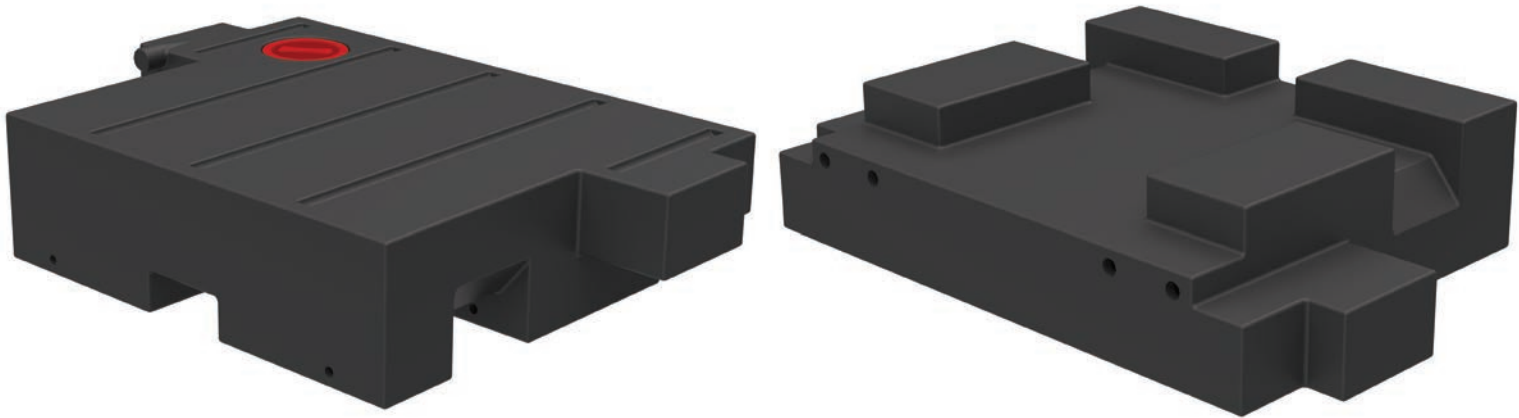
Dimension (cm): 107,0 (length) x 70,0 (width) x 21,8 (height)

Weight (kg): 11,2

Mounting position: In the chassis area behind the rear axle

Vehicle type: Mercedes Sprinter, MAN TGE and VW Crafter from vehicle model 2017

This tank is not suitable for vehicle type L1 and L2.



► WASTE WATER TANK

Item no.: 700000220

Volume: 67 L

Material: Polyethylene

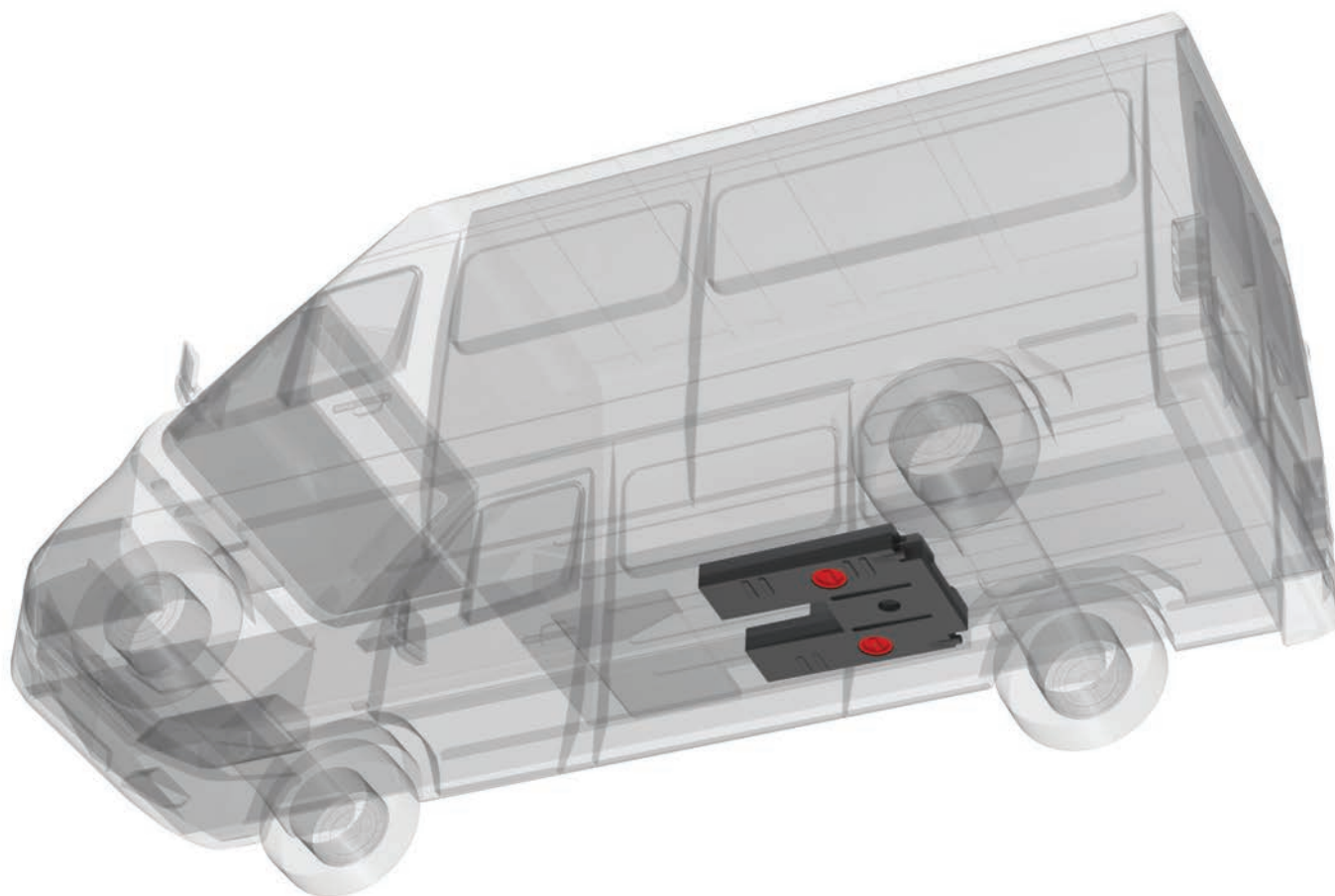
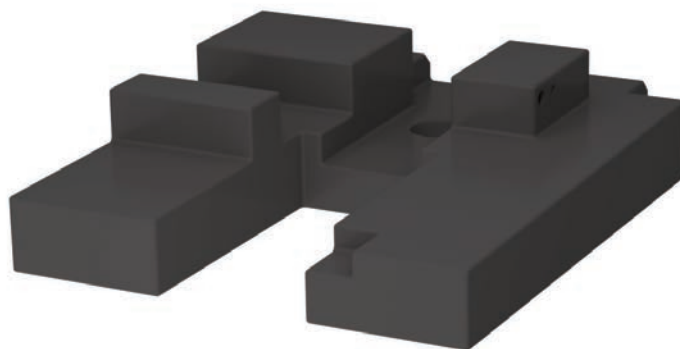
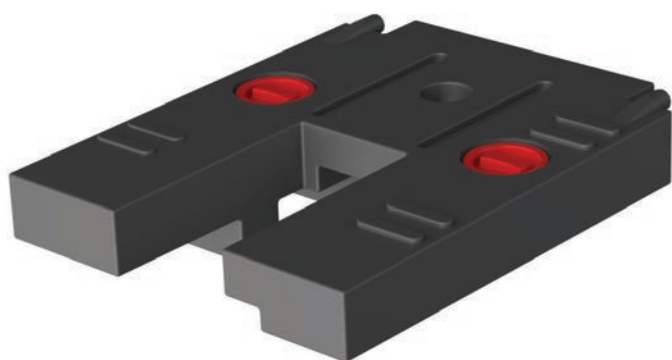
Dimension (cm): 94,0 (length) x 75,0 (width) x 23,7 (height)

Weight (kg): 10,5

Mounting position: In the chassis area in front of the rear axle

Vehicle type: Renault Master from vehicle model 2010

This tank is not suitable for vehicle type L1 and L2.

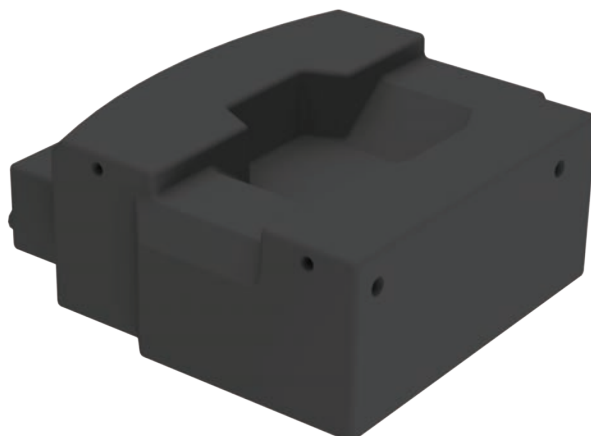
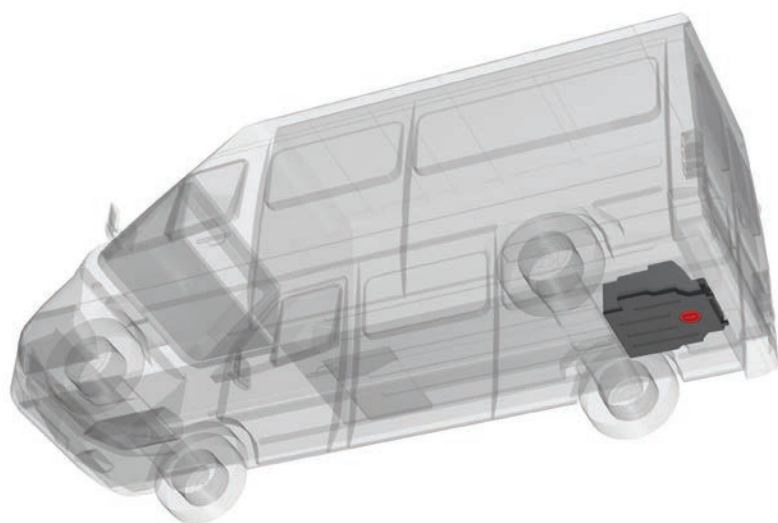


WASTE WATER TANKS

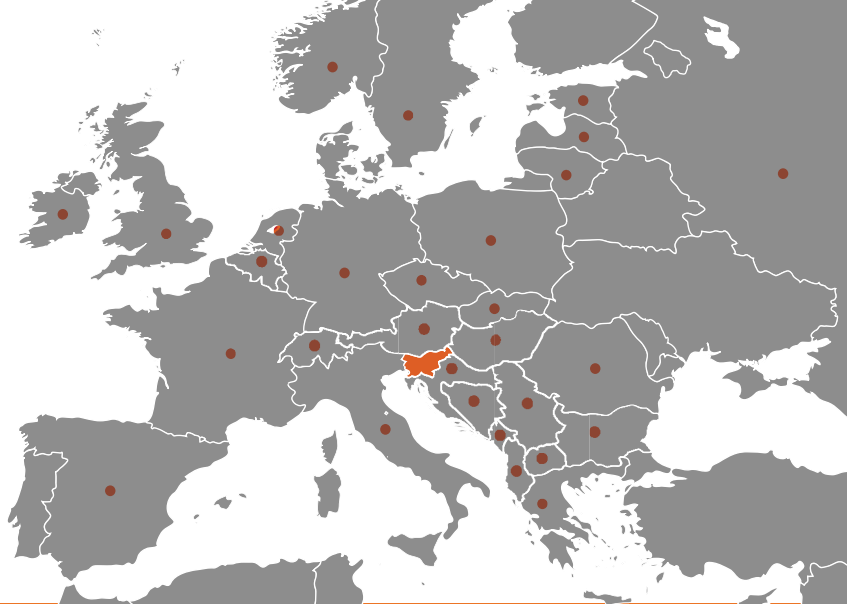


► WASTE WATER TANK

Item no.:	700000280
Volume:	90 L
Material:	Polyethylene
Dimension (cm):	73,8 (length) x 72,0 (width) x 27,8 (height)
Weight (kg):	9,5
Mounting position:	In the chassis area behind the rear axle
Vehicle type:	Ford Transit from vehicle model 2015



APLAST PRODUCTS EXPORTED IN FOLLOWING COUNTRIES ...



IDEA



Based on an idea, improvements and technical data, we prepare a development project, whose end result is a plastic, custom-made product. In doing so, we consider the economic, technical and execution aspects as much as possible.

TOOLMAKING PLANT



We have mastered all the necessary technology for manufacturing high-quality moulds for rotational moulding. The tool manufacturing process encompasses modelling, technical documentation, manufacturing a sheet metal mould, or a steel or aluminium mould using CNC milling and sandblasting.

PRODUCTION ROTOMOULDING



Rotational shaping of plastic masses is a production method used for manufacturing plastic products. It differs from all other process methods by the fact that the eating, melting, shaping and cooling stages take place only after we insert the polymer into the mould and that external pressure is not needed during the shaping process.

PRODUCTION PLASTICS INJECTION MOULDING



Due to the increasing needs for a combination of plastic rotomoulding products and injected parts we have also taken up the injection moulding of products. For this purpose, an injection moulding system for the production of pieces up to 1kg in weight is used.

CONTROL OF PRODUCTION AND PRODUCTS



ISO 9001 and ISO 14001 has brought systematic thinking into our company and the realisation that everything we do is important for quality. Drinking water tanks are manufactured from HDPE materials in accordance with the DVGW-W270 standards.

STORAGE AND DISPATCH OF GOODS



Aplast infrastructure comprises 14.000 m² of covered surfaces of business, production, assembly, storage facilities; machines and devices for making rotomoulding products, metal elements and the final assembly of products.



APLAST proizvodnja in trgovina, d. o. o.
Ložnica pri Žalcu 37, 3310 Žalec, Slovenija
www.aplast.si | info@aplast.si

ISO 9001
ISO 14001

BUREAU VERITAS
Certification



YOUR RETAILER: